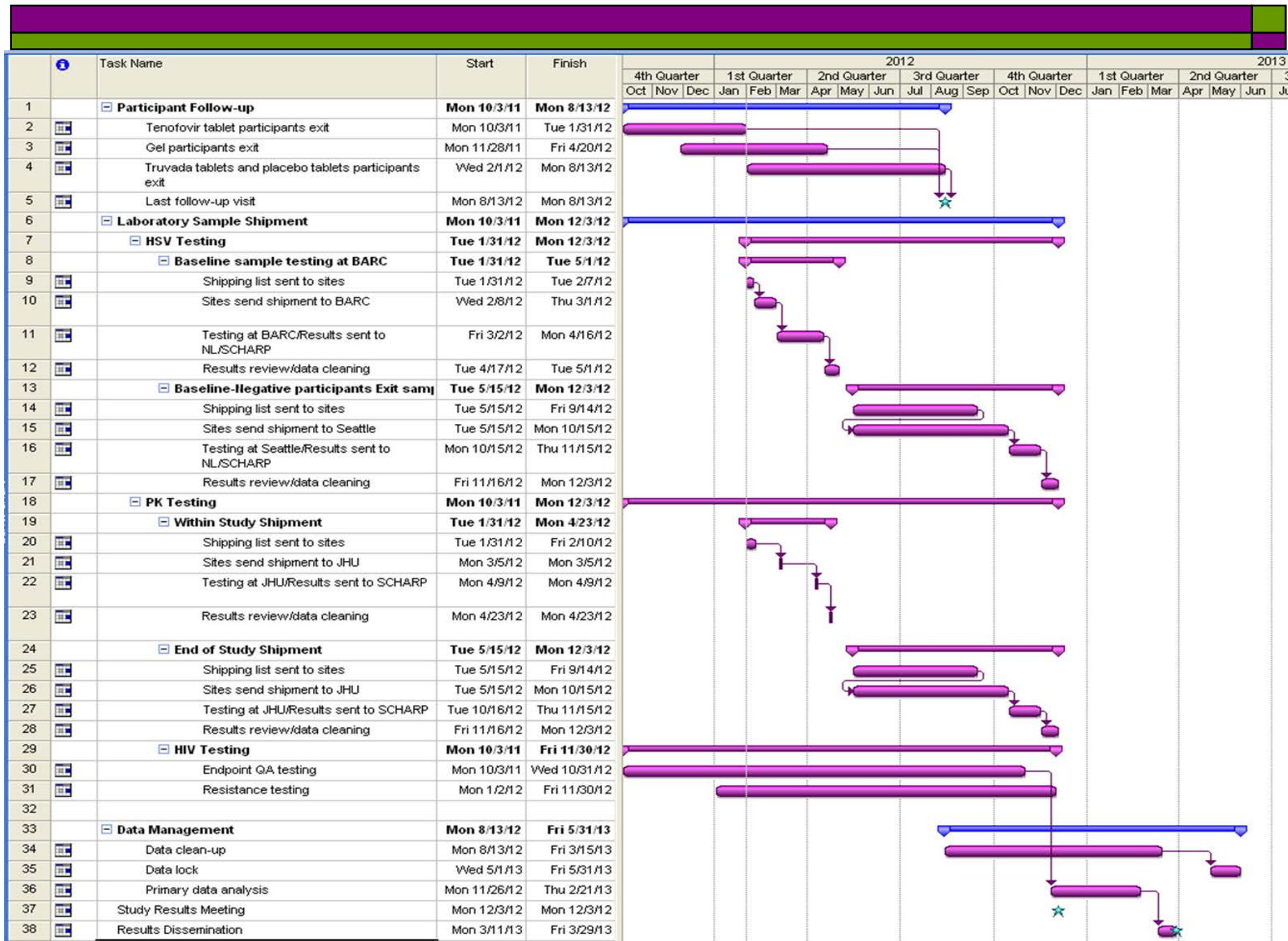


Road to the Finish Line

VOICE Protocol Team Meeting
19 February 2012







Important Deadlines

- Last follow-up visit – 13 August 2012
- Results meeting – 3 December 2012
- Results dissemination – 1st Q2013

Important Deadlines

□ Laboratory

■ HSV Testing

□ Baseline samples:

- Shipped to BARC – 1 March 2012
- Results sent to NL/SCHARP – 15 April 2012

□ Baseline-Negative Participants Exit samples:

- Shipped to Seattle – 15 October 2012
- Results sent to NL/SCHARP – 15 November 2012

Important Deadlines

□ Laboratory

■ PK Testing

□ Within Study Shipment

- Shipped to JHU – 5 March 2012

- Results sent to NL/SCHARP – 9 April 2012

□ End of Study Shipment

- Shipped to JHU – 15 October 2012

- Results sent to NL/SCHARP – 15 November 2012



Important Deadlines

- Laboratory
 - HIV Testing
 - Endpoint QA testing – 31 October 2012
 - Resistance testing – 30 November 2012



Important Deadlines

□ Data Management

- Data clean-up – Mid 1st Q2013
- Data lock – End 1st Q2013/early 2nd Q2013
- Primary data analysis – Early 1st Q2013

Questions

