



HIV TESTING ALGORITHM

By Erasmus Mhizha
(UZ-UCSF)

Outline

- Definition
- HIV Testing Methods
- MTN 003 Algorithms
- Interpretation
- MTN 018 Algorithms
- Interpretation
- Conclusion

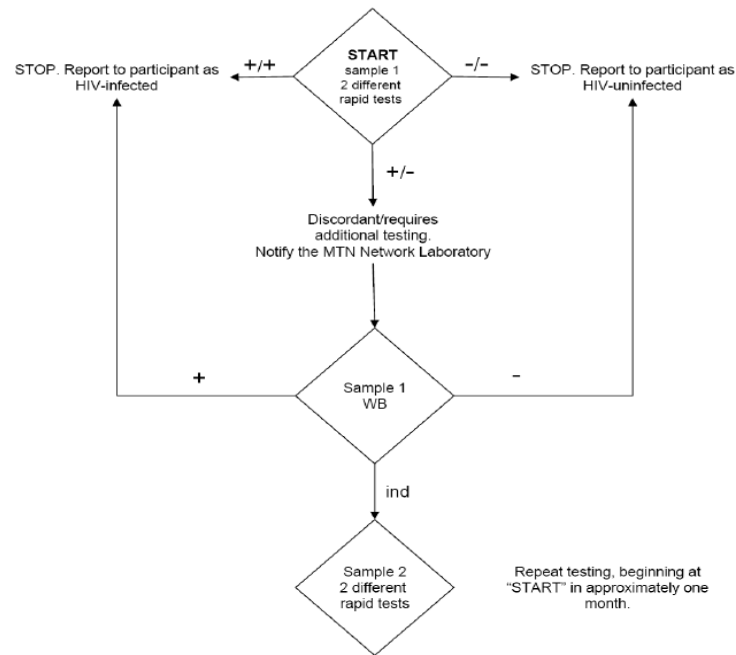
Definition: HIV Algorithm

- Steps followed to come up with a laboratory HIV diagnosis

HIV Testing Methods

- Antibody Methods
 - Rapids
 - Western* Blot (WB)
 - ELISA
- Antigen Method
 - P24
- HIV PCR
 - Viral Load (HIV RNA)
 - HIV DNA

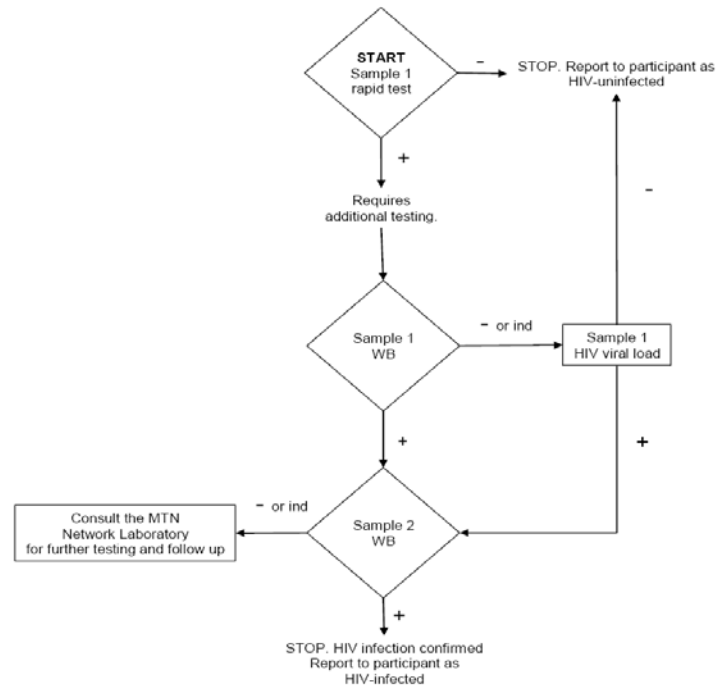
MTN 003 : Screening



Interpretation

- Starts with 2 different rapids
- Further tests done on indeterminate results with NL notification
- NO HIV DNA testing
- Process started after a month if WB is inconclusive

Follow Up and Primary Endpoint

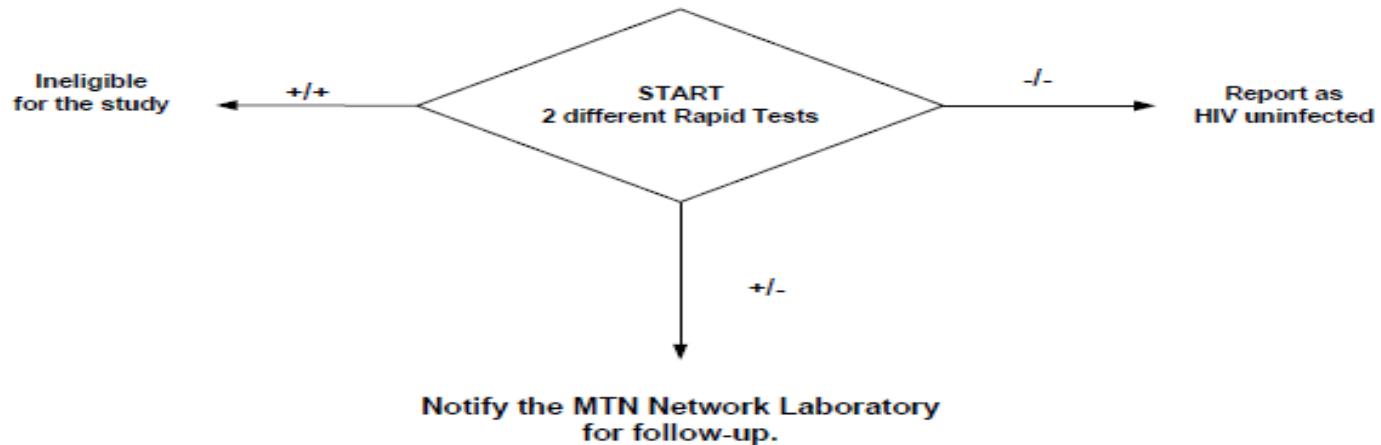


Interpretation

- Starts with 2 rapids
- Negative result confirms HIV uninfected
- Additional testing required for positives (WB)
- Viral load done if WB is negative or inconclusive
- Consultation with NL done on negative or indeterminate WB
- Negative viral load conclusive, positive is confirmed with a WB on a second sample a month later
- Negative or inconclusive result on second sample requires NL consultation
- Positive WB on second sample confirms infection
- **Silent on indeterminate results from sample 1 rapids**

MTN 018

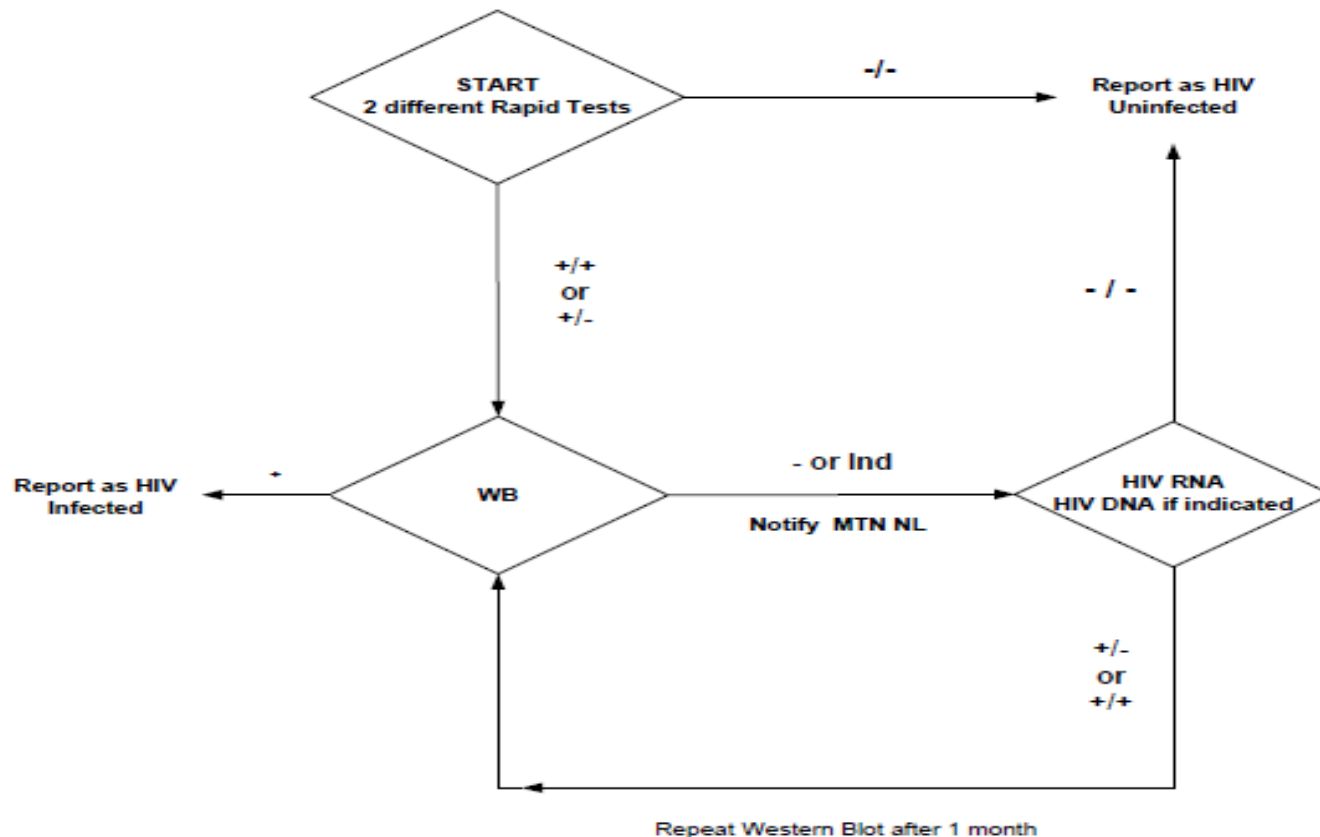
Screening & Enrolment



Interpretation

- Starts with 2 different rapids
- Two positives or negatives confirmatory
- Indeterminate result requires NL notification
- Less costs
- Takes time to confirm diagnosis if there is delayed response from NL
- Participant management if result obtained is indeterminate

MTN 018: Follow-Up and Primary Endpoint Determination



Interpretation

- Starts with 2 rapids
- Negative results treated similarly
- Requires further testing for both indeterminate and positive results (WB)
- Positive WB is conclusive
- Negative or indeterminate WB calls for HIV RNA testing and DNA if indicated
- Notification of NL required
- Indeterminate or positive results require repeat WB after a month on a second sample

Conclusion

- Differentiate these two 'consult' and 'notify'
- Captures all possible outcomes from rapids