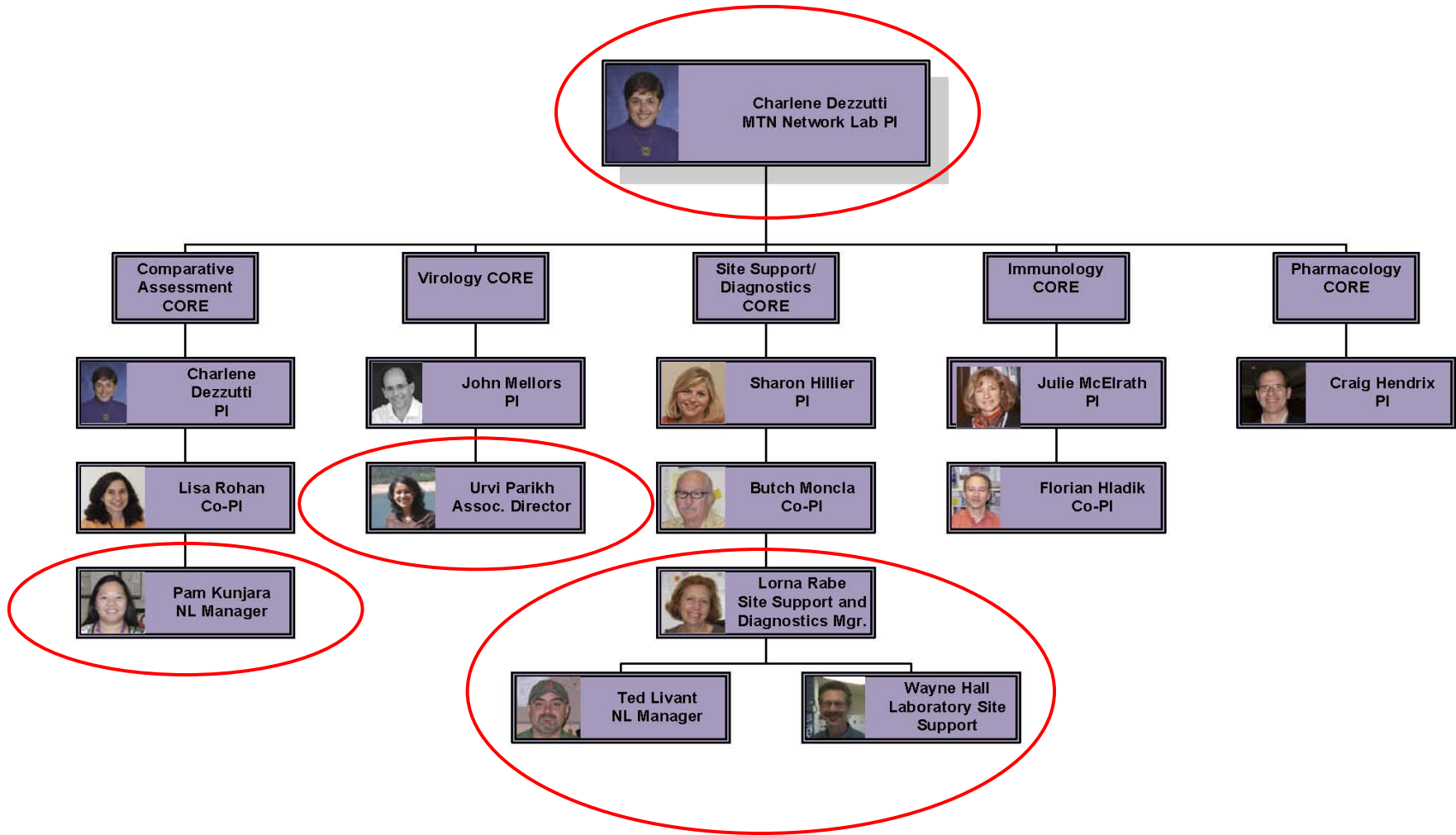


Network Structure, --- Operational Updates

Edward Livant MT (ASCP), MPH
University of Pittsburgh Medical Center
MTN Network Laboratory

Goals for this session

- Review Network Laboratory Structure
- Review the relationship between DAIDS, NL's, SMILE and PPD
- Operational updates/reminders




MTN Network Laboratory		
	9/8/2010	



Lorna Rabe
Site Support and
Diagnostics Mgr.



Ted Livant
NL Manager



Wayne Hall
Laboratory Site
Support





Urvi Parikh
Assoc. Director



Charlene Dezzutti
MTN Network Lab PI



Primary Study Contacts

- Ted: MTN 003, 003B, 015.
- Pam: MTN 016.

When in Doubt, don't look about!

- You can reach Ted, Lorna, Wayne and Pam at this address which can be found on the MTN Website:

People → Email Groups → Laboratory

- mtnnetworklab@mtnstopshiv.org

Overall Lab Oversight

- What is the role of DAIDS?
- What is the role of PPD?
- What is the role of SMILE?
- What is the role of the networks?

DAIDS

- Funds go from DAIDS to the CTU which covers site laboratory costs.
- Site questions sent to MTN will be discussed among ourselves and possibly other networks.
- Some questions sent to MTN may be referred to DAIDS.
- Usha Sharma is the Laboratory Point of Contact For MTN studies

PPD

- Clinical Research Site monitor - external contractor.
- Performs audits and sends these reports to DAIDS.

SMILE

- EQA oversight
 - Investigation reports from deficiencies
- PPD Audit follow up
 - Action Plans
- Guidance and Support-many great resources and great staff

Network Laboratories

- Study Specific Guidance and Oversight
- Partnering with SMILE on EQA oversight and Action Plans
 - PNL vs NL

Operational Updates/Reminders

- MTN 015 activation is upon us!
 - MTN 015 Training was conducted over the weekend
 - The expectation now will be that sites activate as soon as possible
 - I will be in contact with relevant sites-some documents have already been received

Operational Updates/Reminders

- LDMS Reconciliations
 - Error Reports
 - Discrepancies
 - Reports come from SCHARP
 - Corrective action goes to Ted
 - How to clear citations

Operational Updates/Reminders

- Wet Mount Testing in MTN 015
 - Flexibility has been written into the protocol
 - You can do the same testing as VOICE
 - Rapid Trich
 - BV Blue and KOH as indicated
 - Alternatively, you can do standard Wetmount
 - Suggest for sites doing VOICE, follow same testing as VOICE
 - You need to notify NL and FHI if switching
 - Updates to SSP soon after this meeting

Operational Updates/Reminders

- Notify the NL of any discordant HIV rapids
 - Why?
 - What info is needed?
- Notify the NL of any short storage for MTN 003 Plasma archive
 - Why?
 - What info is needed?

Operational Updates/Reminders

■ Recent Updates to MTN 003 SSP

Dipstick Glucose Result	CRF Result
Negative	Negative
100 mg/dl	Trace
250 mg/dl	1+
500 mg/dl	2+
1000 mg/dl	3+
2000 mg/dl	4+

Operational Updates/Reminders

- Recent Updates to MTN 003 SSP
- Plasma archive is allowable in the protocol at any visit after enrollment “as indicated”. Any positive HIV test results after enrollment may be considered an indication for plasma archive. Sites are encouraged to store a plasma archive for any post enrollment positive HIV result even if not required by the protocol.

Operational Updates/Reminders

- Recent Updates to MTN 003 SSP
- In cases where a mandatory archive is not stored or is less than 50% of the required minimum volume, sites may recall the participant to collect the plasma archive without prior approval from the MTN NL. Sites must always notify the MTN NL in these situations.

Operational Updates/Reminders

- Recent Updates to MTN 003 SSP
- Leftover Specimens: Leftover specimens may be temporarily stored for site QA purposes and problem resolution. This process must be described in an SOP or policy onsite which indicates how long the samples will be stored. Local guidelines and regulations must be followed in these situations.

Thank You-Questions?

What the heck was he saying????

